

# Installation Document



## How to install my Garage Door Operator

# Sectional Garage Door Opener

Chain Drive Model - LM-W8ME

FOR RESIDENTIAL USE ONLY

# LiftMaster®



Please read this manual and the safety materials carefully!

- Periodic checks of the garage door opener are required to ensure safe operation.
- This garage door opener is **ONLY** compatible with myQ® and Security+ 2.0® accessories.
- **DO NOT** install on a one-piece door if using devices or features providing unattended close. Unattended devices and features are to be used **ONLY** with sectional doors.
- Attach warning labels to the location indicated on label.



**This manual contains IMPORTANT SAFETY information**  
**DO NOT PROCEED WITH THE INSTALLATION BEFORE READING THOROUGHLY**

## START BY READING THESE IMPORTANT SAFETY INSTRUCTIONS

- Failure to comply with the following instructions may result in serious personal injury or property damage.
- Read and follow all instructions carefully.
- The garage door opener is designed and tested to offer safe service provided it is installed and operated in strict accordance with the instructions in the manual.



**The safety reverse system test is very important. Your unbalanced. Mount the release handle of the emergency release at a height less than 1.8m from the floor.**



**Keep garage door balanced.** Do not let the garage door opener compensate for a binding or sticking garage door. Sticking, binding or unbalanced doors must be repaired before installing this opener.



**Do not wear rings, watches, loose clothing** while installing, or servicing a garage door opener. Wear gloves, safety goggles and suitable protective clothing where appropriate.



**Frequently examine the door installation**, in particular cable, springs and mountings for signs of wear, damage or imbalance. Do not use if repair or adjustment is needed since springs and hardware are under extreme tension and a fault can cause serious personal injury.



To avoid serious personal injury from entanglement, **remove all ropes, chains and locks connected to the garage door** before installing the door opener.



**Installation and wiring** must be in compliance with your local building and electrical codes.



Before performing any repairs or removing covers, the door opener should be separated from the electric supply. The repairs and electrical installation may be performed only by an authorized electrician.



As a rule, fuses are rated according to the power rating of the appliance. If you have to replace a fuse, it is essential, having checked and corrected the reason for the fuse blowing, to replace it only with another of the same rating. The garage door opener GB (UK, NI) plug is fitted with a 3A (BS1362) fuse.



**The safety reverse system test is very important.** Your garage door **MUST** reverse on contact with a 40mm obstacle placed on the floor. Failure to properly adjust the opener may result in serious personal injury from a closing garage door. **Repeat the test once a month and make any necessary adjustments.**



Use the **Manual Release** only for the separation of the carriage from the drive and – if possible – **ONLY** with the door closed. Do not use the red handle to push the door up or pull it down. Operation of the emergency release can lead to uncontrolled movements of the door, if springs are weak or broken or if the door is unbalanced. Mount the release handle of the emergency release at a height less than 1.8m from the floor.



**The Protector System™ must be used for all installations where the closing force as measured on the bottom of the door is over 400N (40kgf).** Excessive force will interfere with the proper operation of the Safety Reverse System or damage the garage door.  
**SPECIAL NOTE: LiftMaster strongly recommends that The Protector System™ be installed on all garage door openers.**



Do not use with a door incorporating a wicket door.



This appliance is not intended for use by persons (including children) with reduced physical, sensory or mental capabilities, or lack of experience and knowledge, unless they have been given supervision or instruction concerning use of the appliance by a person responsible for their safety.



**After installation, ensure that the parts of the door do not extend over public footpaths or roads.**



Install the wall control **in a location where the garage door is visible, at a height of at least 1.5m and out of reach of children. Do not allow children to operate push button(s) or transmitter(s).** Serious personal injury from a closing garage door may result from misuse of the opener.



**Permanently fasten the Warning Labels in Prominent Places**, adjacent to Wall Controls and on manual release mechanism as a reminder of safe operating procedures.



**Activate opener only when the door is in full view, free of obstructions and the opener is properly adjusted. No one should enter or leave the garage while the door is in motion. Do not allow children to operate push button(s) or remote(s).**



**WARNING: Automatic Door** – The door may operate unexpectedly, therefore do not allow anything to stay in the path of the door.



**Do not allow children to play near the door, or with door controls. Keep remotes away from children.**



**Disconnect electric power to the garage door opener before making repairs or removing covers.**



If the supply cord is damaged, it must be replaced by the manufacturer, its service agent or similarly qualified persons in order to avoid hazard.



**This opener should not be installed in a damp or wet space exposed to weather.**



To avoid damage to very light doors (such as fiberglass, aluminum or steel doors), an appropriate reinforcement should.  
**SAVE THESE INSTRUCTIONS.**

## Table of Contents

<b>Preparation</b> .....	<b>3</b>
myQ® Serial Number .....	3
Safety Symbol and Signal Word Review .....	4
Unattended Operation .....	4
Before You Connect with Your Smartphone .....	4
Test the Wi-Fi Signal Strength .....	4
Check the Door .....	5
Tools Needed .....	6
Carton Inventory LM-W8ME .....	6
Rail Hardware .....	6
Completed Installation .....	6
<b>Installation</b> .....	<b>7</b>
Fasten Rail to Opener and Install Chain .....	8
Assemble Header Sleeve .....	8
Position the Header Bracket .....	8
Install the Header Bracket .....	9
Attach Rail to the Header Bracket .....	9
Position the Opener .....	10
Hang the Opener .....	10
Install the Door Control 883LMW .....	11
Wire the Door Control to the Garage Door Opener .....	12
Attach the Warning Labels .....	12
<b>Power and Adjustments</b> .....	<b>13</b>
Connect Power .....	13
Ensure the Door Control is Wired Correctly .....	13
Adjustment Introduction .....	13
Program the Travel .....	14
Timer to Close .....	15
<b>Operation and Maintenance</b> .....	<b>16</b>
Features .....	17
Using Your Garage Door Opener .....	17
Using the Push Button Door Control 883LMW .....	18
Remote Control .....	18
To Erase The Memory .....	19
Maintenance Schedule .....	19
The Remote Control Battery .....	19
<b>Troubleshooting</b> .....	<b>20</b>
Diagnostic Chart .....	20

## Preparation

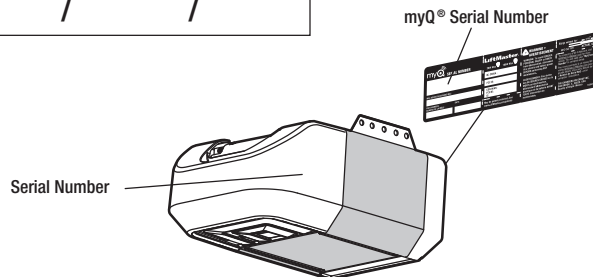
### myQ® Serial Number

Write down the following information for future reference:

myQ® Serial Number:

Product Serial Number:

Date of Purchase:

 /  / 


## Preparation

### Safety Symbol and Signal Word Review

This garage door opener has been designed and tested to offer safe service provided it is installed, operated, maintained and tested in strict accordance with the instructions and warnings contained in this manual.

When you see these Safety Symbols and Signal Words on the following pages, they will alert you to the possibility of **serious injury or death** if you do not comply with the warnings that accompany them. The hazard may come from something mechanical or from electric shock. Read the warnings carefully.



**Mechanical**



**Electrical**

When you see this Signal Word on the following pages, it will alert you to the possibility of damage to your garage door and/or the garage door opener if you do not comply with the cautionary statements that accompany it. Read them carefully.



### Unattended Operation

The Timer-to-Close (TTC) feature, the myQ® App, and myQ® Garage Door and Gate Monitor are examples of unattended close and are to be used **ONLY** with sectional doors. Any device or feature that allows the door to close without being in the line of sight of the door is considered unattended close. The Timer-to-Close (TTC) feature, the myQ® App, and any other myQ® devices are to be used **ONLY** with sectional doors. The optional protector system (safety reversing sensors) must be installed for Unattended Operation to work.

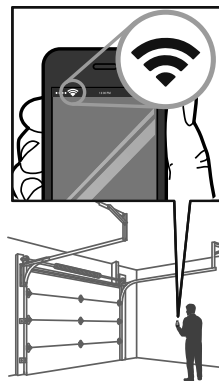
### Before You Connect with Your Smartphone

Monitor and control your garage door from anywhere using the myQ® App. You will need:

- Wi-Fi enabled smartphone, tablet or laptop
- Broadband Internet Connection
- Wi-Fi signal in the garage (2.4 GHz, 802.11b/g/n required)
- Password for your home network (router's main account, not guest network)

### Test the Wi-Fi Signal Strength

Make sure your mobile device is connected to your Wi-Fi network. Hold your mobile device in the place where your garage door opener will be installed and check the Wi-Fi signal strength.



#### Check Signal Strength. If you see:



**Wi-Fi signal is strong.**  
The garage door opener will connect to your Wi-Fi network.



**Wi-Fi signal is weak.**  
The garage door opener may connect to your Wi-Fi network. If not, try one of the options below to improve the Wi-Fi signal:



**No Wi-Fi signal.**  
The garage door opener will not be able to connect to your Wi-Fi network. Try one of the options below to improve the Wi-Fi signal:

- Move your router closer to the garage door opener to minimize interference from walls and other objects
- Buy a Wi-Fi range extender

Visit [www.liftmaster-me.com](http://www.liftmaster-me.com) for more details.

## Preparation

### Section 1 - Check the Door

#### **WARNING**

To prevent possible **SERIOUS INJURY** or **DEATH**:

- ALWAYS call a trained door systems technician if garage door binds, sticks, or is out of balance. An unbalanced garage door may NOT reverse when required.
- NEVER try to loosen, move or adjust garage door, door springs, cables, pulleys, brackets or their hardware, ALL of which are under **EXTREME** tension.
- Disable ALL locks and remove ALL ropes connected to garage door **BEFORE** installation and operating garage door opener to avoid entanglement.
- This opener system is equipped with an unattended operation feature. The door could move unexpectedly. **NO ONE SHOULD CROSS THE PATH OF THE MOVING DOOR.**

#### **CAUTION**

To prevent damage to garage door and opener:

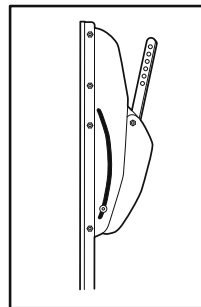
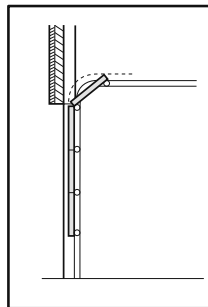
- ALWAYS disable locks **BEFORE** installing and operating the opener.
- ONLY operate garage door opener at 220 V - 240 V mains to avoid malfunction and damage.

Before you begin:

- Disable locks.
- Remove any ropes connected to the garage door.

Complete the following test to make sure the garage door is balanced and is not sticking or binding.

1. Lift the door halfway up. Release the door. If balanced, it should stay in place, supported entirely by its springs.
  2. Raise and lower the door to check for binding or sticking.
- If your door binds, sticks or is out of balance, call a trained door systems technician.



10mm, 8mm,  
4.5mm, 4mm

11mm, 13mm

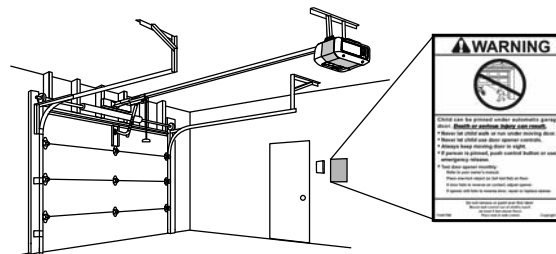
- Door bracket
- Curved door arm
- Garage door opener
- Sprocket cover
- White and red/white wire
- Safety labels and literature
- Door control (883LMW)
- Remote transmitters (ME-960LM)
- Hardware bag

**883LMW**  
Wired Wall Control



- Header bracket
- Clevis pin
- R Clip
- Lag screws
- Rope
- Handle
- Rail hanging bracket
- Hanging straps
- Rail mounting brackets

As you proceed with the assembly, installation and adjustment procedures in this manual, you may find it helpful to refer back to this illustration of a completed installation.



### IMPORTANT INSTALLATION INSTRUCTIONS



## WARNING

### To reduce the risk of SEVERE INJURY or DEATH:

1. READ AND FOLLOW ALL INSTALLATION WARNINGS AND INSTRUCTIONS.
2. Install garage door opener ONLY on properly balanced and lubricated garage door. An improperly balanced door may NOT reverse when required and could result in SEVERE INJURY or DEATH.
3. ALL repairs to cables, spring assemblies and other hardware MUST be made by a trained door systems technician BEFORE installing opener.
4. Disable ALL locks and remove ALL ropes connected to garage door BEFORE installing opener to avoid entanglement.
5. Where possible, install the door opener 7 feet (2.13 m) or more above the door.
6. Mount the emergency release within reach, but at least 6 feet (1.83 m) above the door and avoiding contact with vehicles to avoid accidental release.
7. NEVER connect garage door opener to power source until instructed to do so.
8. NEVER wear watches, rings or loose clothing while installing or servicing opener. They could be caught in garage door or opener mechanisms.
9. Install wall-mounted garage door control:
  - a. within sight of the garage door.
  - a. out of reach of small children at a minimum height of 5 feet (1.5 m) above doors, landings, steps or any other adjacent walking surface.
  - a. away from ALL moving parts of the door.
10. Place entrapment warning label on wall next to garage door control in a prominent location.
11. Place emergency release/safety reverse test label in plain view on inside of garage door.
12. Upon completion of installation, test safety reversal system. Door MUST reverse on contact with a 1-1/2" (3.8 cm) high object (or a 2x4 laid flat) on the door.
13. DO NOT install on a one-piece door if using devices or features providing unattended close. Unattended devices and features are to be used ONLY with sectional doors.

DOOR HEIGHT: Sectional Doors	BELT & RAIL PART NUMBER:	RAIL LENGTH:	CEILING FIXING POINTS: (standard)	ALTERNATE FIXING POINT:
Up to 2.5m	7025CR3-ME	3300 mm single piece	3140 mm	3250 mm
Up to 3.0m	7030CR3-ME	3822 mm single piece	Flexible	Flexible



## Installation

### Section 6 - Fasten Rail to Opener and Install Chain

Remove four washered bolts (1) from top of opener. Place rail (2) on opener, flush with stops (3) on top of opener. Wrap chain (4) around slot in spreader (5) and over sprocket (6).

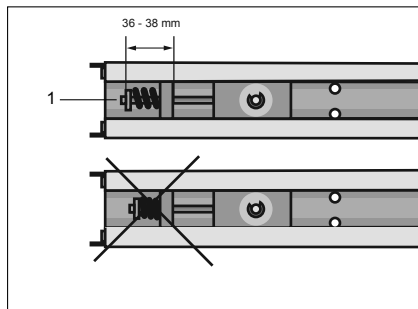
Push idler pulley bracket assembly toward front of the rail to eliminate excess slack in chain.

Align bolt holes on brackets (7) with bolt holes on opener. Secure brackets to opener with previously removed bolts. Tighten bolts securely. The opener sprocket teeth must engage the chain.

### Section 7 - Assemble Header Sleeve

Note: The spring must be able to compress and bounce during operation. Final tensioning can be performed after installation if necessary. Over tightening the belt may overload the system and cause excessive wear.

1. Tension the belt by adjusting the nut on the pulley assembly clockwise until the spring is engaged.
2. Continue tightening to compress the spring and remove all the slack in the belt. **DO NOT OVER-TIGHTEN** but ensure belt is firm. 36-38mm as indicated in the diagram is normal.



### Section 8 - Position the Header Bracket

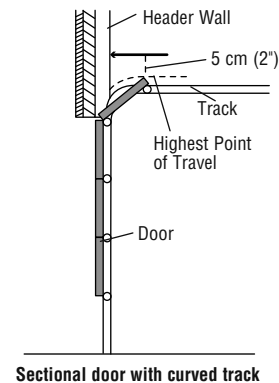
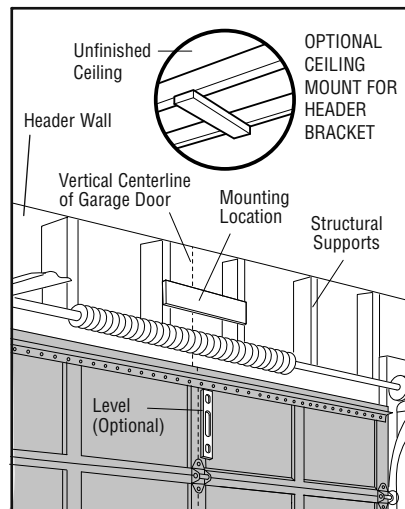
The header bracket must be rigidly fastened to a structural support of the garage.

Reinforce the wall or ceiling with a 40mm (1-1/2") board if necessary. Failure to comply may result in improper operation of safety reverse system.

You can attach the header bracket either to the header wall or to the ceiling. Follow the instructions that will work best for your particular requirements.

With the door closed, mark the vertical centerline of the garage door. Extend line onto header wall above the door.

Open door to highest point of travel. Draw an intersecting horizontal line on header wall 5cm (2") above high point to provide travel clearance for top edge of door.



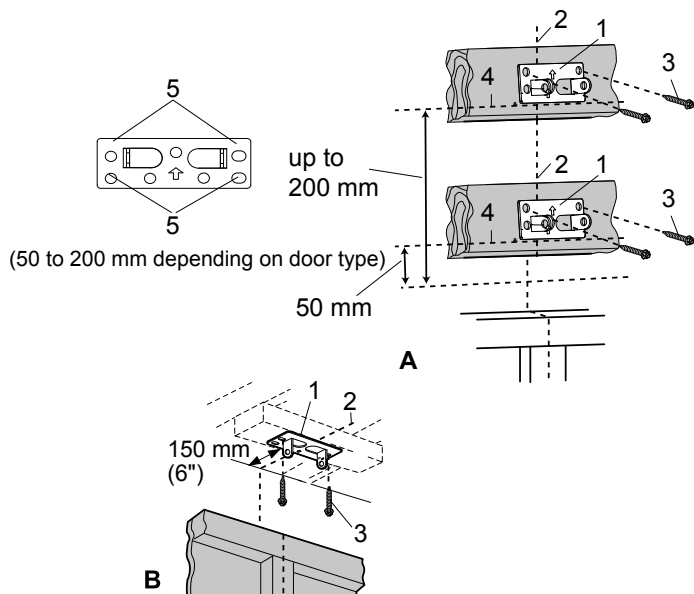
Sectional door with curved track

## Installation

### Section 9 - Install the Header Bracket

**NOTE:** Refer to vertical center and horizontal lines created in the previous section for proper placement of header bracket.

- A. Wall Mount:** center the header bracket on the vertical center line with the bottom edge of the header bracket on the horizontal line (with the arrow pointing toward the ceiling). Drill and secure the Header Bracket using the most suitable variation of holes. If using the wood screws provided, use a 4.5mm pilot drill. If securing to a metal fixture, self-tapping "tek" screws may be more suitable.
- B. Ceiling Mount:** extend vertical center line onto the ceiling. Centre the header bracket on the vertical mark no more than 150mm from the wall. Make sure the arrow is pointing toward the opener. Drill and secure the Header Bracket using the most suitable variation of holes. If using the wood screws provided, use a 4.5mm pilot drill. If securing to a metal fixture, self-tapping "tek" screws may be more suitable. For concrete ceiling fixture, 8mm wall plugs are provided.

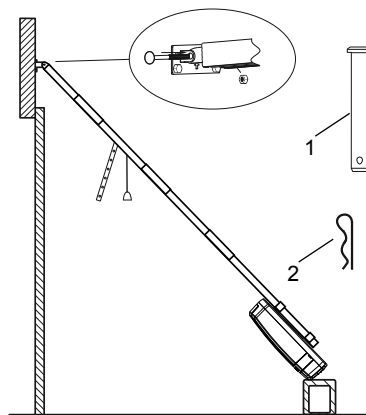


### Section 10 - Attach Rail to the Header Bracket

- Position the assembled opener on the garage floor below the header bracket. Use foam packing material as a protective base.

**NOTE:** If the door spring is in the way you'll need help. Have someone hold the opener securely on a temporary support to allow the rail to clear the spring.

- Position the rail bracket against the header bracket.
- Align the bracket holes and secure with the 80mm clevis pin and "R" clip.



## Installation

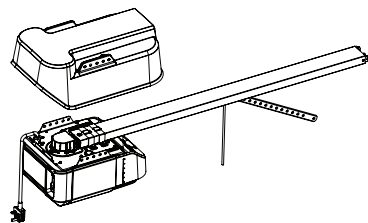
### Section 11 - Position the Opener

Disengage the trolley mechanism and slide it back towards the power-head. Secure the hanging push arm up into the rail assembly temporarily using a tape or rope, to avoid a hazard. You will need a 50mm piece of timber or similar spacer to gauge the distance between door and rail.

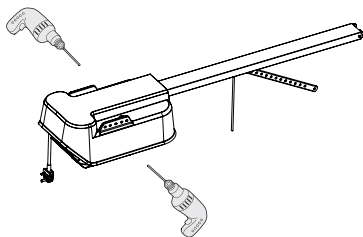
1. Raise the opener onto support.
2. Open the door completely, place a 50mm spacer between the door and the rail.
3. The final positioning of the rail should be relatively parallel to the horizontal door panels.

**NOTE: Below instructions to fit the weather cover:**

Fit the weather cover onto the rail and power head.



With the weather cover held firmly onto the power head, drill 2 x diameter 8mm holes through the weather cover in the mounting positions required.



### Section 12 - Hang the Opener

The opener must be securely fastened to a structural support of the garage.

Three representative installations are shown. Yours may be different. Hanging brackets (1) should be angled (Figure A) to provide rigid support. On finished ceilings (Figure B), attach a sturdy metal bracket (not supplied) (4) to a structural support before installing the opener.

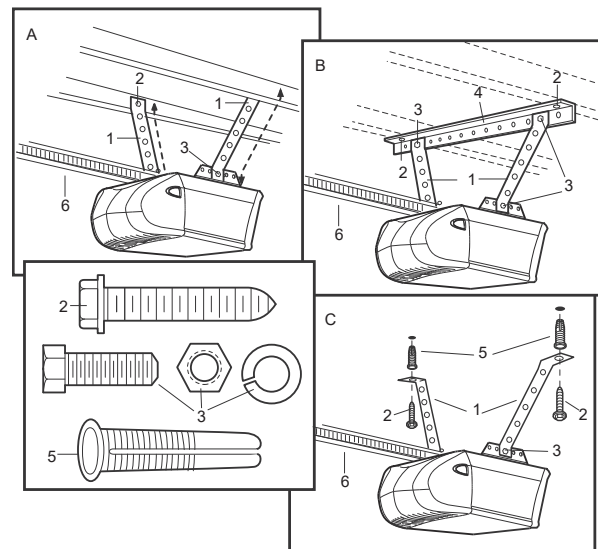
For concrete ceiling mount (Figure C), use concrete anchors (5) provided.

On each side of opener measure the distance from the opener to the structural support (or ceiling). Cut both pieces of the hanging bracket to required lengths. Flatten one end of each bracket and bend or twist to fit the fastening angles.

Do not bend at the bracket holes. Drill 4,5mm (3/16") pilot holes in the structural supports (or ceiling). Attach flattened ends of brackets to supports with wood screws (2). Lift opener and fasten to hanging brackets with screw, lock washer and nut (3). Check to make sure rail is centered over the door. Remove 25mm (1") board.

Operate door manually. If door hits the rail, raise header bracket.

Use rail grease to lubricate bottom surface of rail (6).



## Installation

### Section 13 - Fasten Door to Bracket

The door bracket must be securely fastened to the frame or a structural support on the door.

#### Mounting position to Sectional Doors

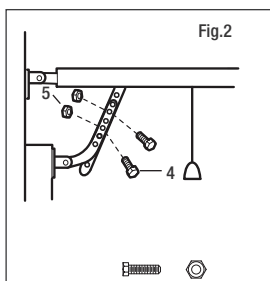
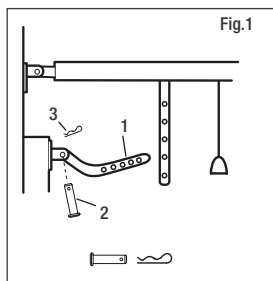
1. Align the bracket on the centre line, measure down 100 -300 mm from the door top edge.
2. Secure the bracket in this position, using the most suitable variation of holes available.

### Section 14 - Attach Door Arm to Trolley

Make sure the garage door is fully closed. Pull the manual release cord to disengage the trolley. Slide the trolley to around 300 mm from the header bracket.

1. The straight door arm is already preassembled to the trolley.
2. Install the curved arm onto the door bracket using the Clevis pin
3. Move the straight and curved arms together and secure using two bolts and nuts provided.

**NOTE: for Sectional Doors - Ensure the angle of the straight arm is around 20 degrees from vertical, when the door is fully closed.**



### Section 15 - Install the Door Control 883LMW



## WARNING

To prevent possible **SERIOUS INJURY** or **DEATH** from electrocution:

- Be sure power is **NOT** connected **BEFORE** installing door control.
- Connect door control **ONLY** to 12 VOLT low voltage wires.

To prevent possible **SERIOUS INJURY** or **DEATH** from a closing garage door:

- Install door control within sight of garage door, out of reach of small children at a minimum height of 5 feet (1.5 m) above floors, landings, steps or any other adjacent walking surface, and away from ALL moving parts of door.
- **NEVER** permit children to operate or play with door control push buttons or remote control transmitters.
- Activate door **ONLY** when it can be seen clearly, is properly adjusted, and there are no obstructions to door travel.
- **ALWAYS** keep garage door in sight until completely closed. **NEVER** permit anyone to cross path of closing garage door.

#### INTRODUCTION

Compatible with myQ® and Security+ 2.0 accessories. Your garage door opener is compatible with up to 2 Smart Control Panels or 4 of any other Security+ 2.0 door controls.

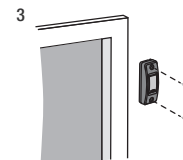
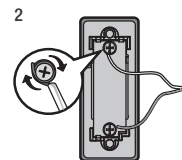
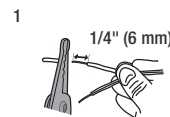
**NOTE:** Older LiftMaster door controls and third party products are not compatible.

Install door control within sight of garage door, out of reach of small children at a minimum height of 1.5m above floors, landings, steps or any other adjacent walking surface, and away from ALL moving parts of door. For gang box installations it is not necessary to drill holes or install the drywall anchors. Use the existing holes in the gang box.

**NOTE: Your product may look different than the illustrations.**



1. Strip 6 mm of insulation from one end of the wire and separate the wires.
2. Connect one wire to each of the two screws on the back of the door control.  
The wires can be connected to either screw.
3. Mount the door control with the hardware provided.





## Power and Adjustments

### Section 18 - Connect Power

#### **WARNING**

To prevent possible SERIOUS or DEATH from electrocution or fire:

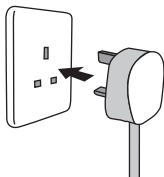
- Be sure power is NOT connected to the opener and disconnect power to circuit BEFORE removing cover to establish permanent wiring connection.
- Garage door installation and wiring MUST be in compliance with ALL local electrical and building codes.
- NEVER use an extension cord, 2-wire adapter or change plug in ANY way to make it fit outlet. Be sure the opener is grounded.

**To avoid installation difficulties, do not activate the garage door opener at this time.**

To reduce the risk of electric shock, your garage door opener has a grounding type plug with a third grounding pin. This plug will only fit into a grounding type outlet. If the plug doesn't fit into your outlet, contact a qualified electrician to install the proper outlet.

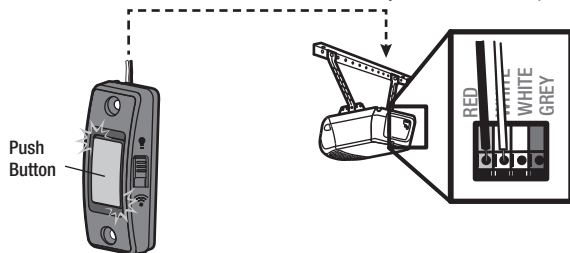
1. Plug in the garage door opener into a grounded outlet.
2. DO NOT run garage door opener at this time.

#### TYPICAL WIRING



### Section 19 - Ensure the Door Control is Wired Correctly

If the door control has been installed and wired correctly, the LED behind the push button will blink.



### Section 20 - Introduction

#### **WARNING**

Without a properly installed safety reversal system, persons (particularly small children) could be SERIOUSLY INJURED or KILLED by a closing garage door.

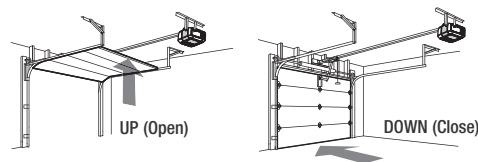
- Incorrect adjustment of garage door travel limits will interfere with proper operation of safety reversal system.
- After ANY adjustments are made, the safety reversal system MUST be tested. Door MUST reverse on contact with 3.8 cm high object (or 2x4 laid flat) on floor.

#### **CAUTION**

To prevent damage to vehicles, be sure fully open door provides adequate clearance.

Your garage door opener is designed with electronic controls to make setup and adjustments easy. The adjustments allow you to program where the door will stop in the open (UP) and close (DOWN) position. The electronic controls sense the amount of force required to open and close the door. The force is adjusted automatically when you program the travel.

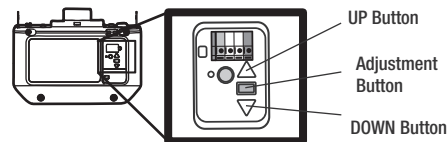
**NOTE: If anything interferes with the door's upward travel it will stop. If anything interferes with the door's downward travel, it will reverse.**



#### PROGRAMMING BUTTONS

The programming buttons are located on the left or back side panel of the garage door opener and are used to program the travel. While programming, the UP and DOWN buttons can be used to move the door as needed.

#### PROGRAMMING BUTTONS



## Power and Adjustments

### Section 21 - Program the Travel

#### **WARNING**

Without a properly installed safety reversal system, persons (particularly small children) could be **SERIOUSLY INJURED** or **KILLED** by a closing garage door.

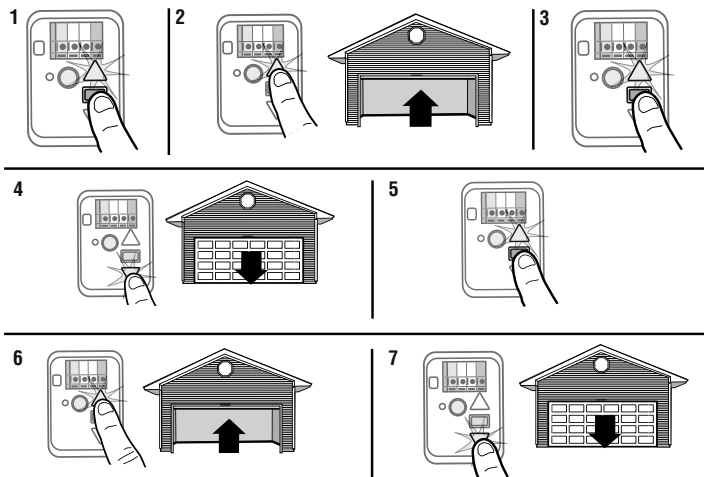
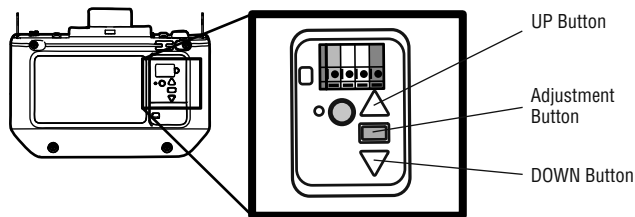
- Incorrect adjustment of garage door travel limits will interfere with proper operation of safety reversal system.
- After **ANY** adjustments are made, the safety reversal system **MUST** be tested. Door **MUST** reverse on contact with 3.8 cm high object (or 2x4 laid flat) on floor.

While programming, the UP and DOWN buttons can be used to move the door as needed.

1. Press and hold the Adjustment Button until the UP Button begins to flash and/or a beep is heard.
  2. Press and hold the UP Button until the door is in the desired UP position.
  3. Once the door is in the desired UP position press and release the Adjustment Button. The garage door opener lights will flash twice and the DOWN Button will begin to flash.
  4. Press and hold the DOWN button until the door is in the desired DOWN position.
  5. Once the door is in the desired DOWN position press and release the Adjustment Button. The garage door opener lights will flash twice and the UP Button will begin to flash.
  6. Press and release the UP Button. When the door travels to the programmed UP position, the DOWN Button will begin to flash.
  7. Press and release the DOWN Button. The door will travel to the programmed DOWN position.
- Programming is complete.

If the garage door opener lights are flashing 5 times during the steps for Program the Travel, the programming has timed out. If the garage door opener lights are flashing 10 times during the steps for Program the Travel, the safety reversing sensors are misaligned or obstructed. When the sensors are aligned and unobstructed, cycle the door through a complete up and down cycle using the remote control or the UP and DOWN buttons. Programming is complete. If you are unable to operate the door up and down, repeat the steps for Programming the Travel.

#### PROGRAMMING BUTTONS



## Power and Adjustments

### Section 22 - Timer to Close Feature (TTC)

#### **WARNING**

Door may operate unexpectedly, therefore do not allow anything to stay in the path of the door.

The Timer to Close feature requires The Protector System™ (IR Beams) to be installed.

#### Operation:

This feature allows the door to automatically close from a fully open position after a specified time. The delay can be set from 10 to 180 seconds in 10 second increments, by using the opener control buttons.

If the door encounters an obstruction while closing, the door will stop and return to the UP position. The Courtesy lamp will then flash 10 times.

To Activate TTC, or change a preset time:

1. Start with the door fully CLOSED.
2. Enter into TTC Activation mode by pressing both PROG and DOWN buttons together for 3 seconds (figure2). Release when the courtesy light flashes twice.
3. Press the UP button once for each 10 second increment required of TTC (figure 3.eg. twice for 20 seconds). Press the DOWN arrow to reduce, if needed.
4. Press and release the PROG button to save this time (figure 4), Courtesy light will flash once. TTC is now activated.

TEST: Operate the door to the UP position. Keep clear of the IR Beams and check the door closes after the preset time.

To Deactivate TTC:

1. Enter into TTC Activation mode by pressing both PROG and DOWN buttons together for 3 seconds (figure 2). Release when the courtesy light flashes twice.
2. Press and release the PROG button to save (figure 4), courtesy light will flash once. TTC is now deactivated.

figure 1

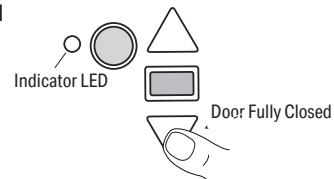


figure 2

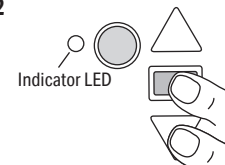


figure 3

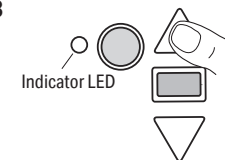


figure 4

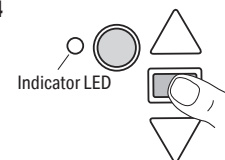
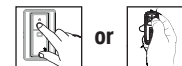


figure 5





### **WARNING**

#### **To reduce the risk of SEVERE INJURY or DEATH:**

1. READ AND FOLLOW ALL WARNINGS AND INSTRUCTIONS.
  2. ALWAYS keep remote controls out of reach of children. NEVER permit children to operate or play with garage door control push buttons or remote controls.
  3. ONLY activate garage door when it can be seen clearly, it is properly adjusted, and there are no obstructions to door travel.
  4. ALWAYS keep garage door in sight and away from people and objects until completely closed. NO ONE SHOULD CROSS THE PATH OF THE MOVING DOOR.
  5. NO ONE SHOULD GO UNDER A STOPPED, PARTIALLY OPENED DOOR.
  6. If possible, use emergency release handle to disengage trolley ONLY when garage door is CLOSED. Use caution when using this release with the door open. Weak or broken springs or unbalanced door could result in an open door falling rapidly and/or unexpectedly and increasing the risk of SEVERE INJURY or DEATH.
  7. NEVER use emergency release handle unless garage doorway is clear of persons and obstructions.
  8. NEVER use handle to pull garage door open or closed. If rope knot becomes untied, you could fall.
  9. After ANY adjustments are made, the safety reversal system MUST be tested.
  10. Safety reversal system MUST be tested every month. Garage door MUST reverse on contact with 1-1/2" (3.8 cm) high object (or a 2x4 laid flat) on the floor. Failure to adjust the garage door opener properly increases the risk of SEVERE INJURY or DEATH.
  11. ALWAYS KEEP GARAGE DOOR PROPERLY BALANCED. An improperly balanced door may NOT reverse when required and could result in SEVERE INJURY or DEATH.
  12. ALL repairs to cables, spring assemblies and other hardware, ALL of which are under EXTREME tension, MUST be made by a trained door systems technician.
  13. To avoid interference with the proper operation of the garage door opener when using a welder in the garage, unplug garage door opener before operating welder.
  14. To avoid SERIOUS PERSONAL INJURY or DEATH from electrocution, disconnect ALL electric and battery power BEFORE performing ANY service or maintenance.
  15. This operator system is equipped with an unattended operation feature. The door could move unexpectedly. NO ONE SHOULD CROSS THE PATH OF THE MOVING DOOR.
  16. DO NOT install on a one-piece door if using devices or features providing unattended close. Unattended devices and features are to be used ONLY with sectional doors.
- ### **17. SAVE THESE INSTRUCTIONS.**

# Operation and Maintenance

## Features

Your garage door opener is equipped with features to provide you with greater control over your garage door operation.

### ALERT2CLOSE

The Alert2Close feature provides a visual and an audible alert that an unattended door is closing.

### TIMER-TO-CLOSE (TTC)

The TTC feature automatically closes the door after a specified time period that can be adjusted using the door control. Prior to and during the door closing the garage door opener lights will flash and the garage door opener will beep.

### MYQ

myQ® technology uses a 900MHz signal to provide two-way communication between the garage door opener and myQ® enabled accessories. Your garage door opener is compatible with up to 16 myQ® accessories.

### SECURITY+ 2.0 REMOTE CONTROLS AND DOOR CONTROLS

Your garage door opener has already been programmed at the factory to operate with your remote control, which changes with each use, randomly accessing over 100 billion new codes. Compatible with myQ® and Security+ 2.0 accessories.

**NOTE: Older LiftMaster remote controls, door controls, and third party products are not compatible.**

Security+ 2.0 Accessories	Memory Capacity
Remote Controls	Up to 12
Door Controls	Up to 2 Smart Control Panels or 4 of any other Security+ 2.0 door controls
Keyless Entries	Up to 1

### THE PROTECTOR SYSTEM® (SAFETY REVERSING SENSORS, SOLD SEPARATELY)

When properly connected and aligned, the safety reversing sensors will detect an obstruction in the path of the infrared beam. If an obstruction breaks the infrared beam while the door is closing, the door will stop and reverse to full open position, and the opener lights will flash 10 times. If the door is fully open, and the safety reversing sensors are not installed, or are misaligned, the door will not close from a remote control. However, you can close the door if you hold the button on the door control or keyless entry until the door is fully closed. The safety reversing sensors do not effect the opening cycle. The optional protector system (safety reversing sensors) must be installed for Unattended Operation to work.

## Using Your Garage Door Opener

The garage door opener can be activated through a wall-mounted door control, remote control, wireless keyless entry or myQ® accessory. When the door is closed and the garage door opener is activated the door will open. If the door senses an obstruction or is interrupted while opening the door will stop. When the door is in any position other than closed and the garage door opener is activated the door will close. If the garage door opener senses an obstruction while closing, the door will reverse. If the obstruction interrupts the sensor beam the garage door opener lights will blink 10 times. However, you can close the door if you hold the button on the door control or keyless entry until the door is fully closed. The safety reversing sensors do not affect the opening cycle. The safety reversing sensor must be connected and aligned correctly before the garage door opener will move in the down direction.

### Connect With Your Smart Phone

The Wi-Fi Garage Door Opener is compatible with up to 16 myQ® enabled accessories. Up to 10 devices can be paired to the Wi-Fi garage door opener's internal gateway. These devices can be controlled with the myQ® App. These devices include any combination of myQ® garage door openers, Wi-Fi garage door openers, myQ® light controls, or myQ® commercial door operators.

### You Will Need:

- Wi-Fi enabled smartphone, tablet or laptop
- Broadband Internet Connection
- Wi-Fi signal in the garage (2.4 GHz, 802.11b/g/n required)
- Password for your home network (router's main account, not guest network)
- myQ® serial number located on the garage door opener

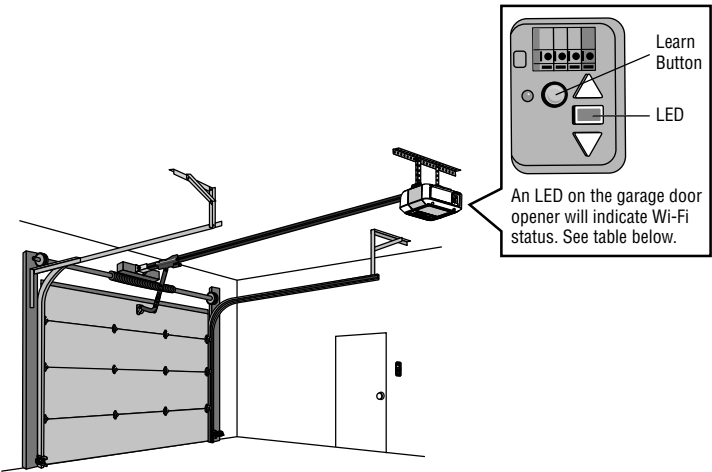
### DOWNLOAD THE myQ® APP TO SET UP AN ACCOUNT AND CONNECT

Open and close your door, get alerts and set schedules from anywhere. Connected smart garage door openers also receive software updates to ensure the opener has the latest operational features.

1. Download the myQ® App.
2. Set up an account and connect.

For more information on connecting your garage door opener, visit [liftmaster-me.com](http://liftmaster-me.com).

# Operation and Maintenance



Wi-Fi Status	
LED	Definition
Blue	<b>Off</b> - Wi-Fi is not turned on. <b>Blinking</b> - Garage door opener is in Wi-Fi learn mode. <b>Solid</b> - Mobile device connected to the garage door opener.
Blue and Green	<b>Blinking</b> - Attempting to connect to router.
Green	<b>Blinking</b> - Attempting to connect to the Internet server. <b>Solid</b> - Wi-Fi has been set up and garage door opener is connected to the Internet.

## Using the Push Button Door Control 883LMW

### SYNCHRONIZE THE DOOR CONTROL

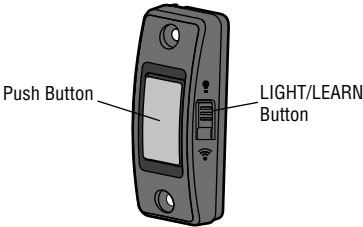
To synchronize the door control to the garage door opener, press the push button until the garage door opener activates (it may take up to 3 presses). Test the door control by pressing the push button, each press of the push button will activate the garage door opener.

### PUSH BUTTON

Press the push button to open or close the door.

### LIGHT/LEARN BUTTON

Press the LIGHT button to turn the garage door opener lights on or off. When the lights are turned on they will stay on until the LIGHT button is pressed again, or until the garage door opener is activated. Once the garage door opener is activated the lights will turn off after the specified period of time (the factory setting is 4-1/2 minutes). The LIGHT button will not control the lights when the door is in motion.



## Remote Control

Your remote control has been programmed at the factory to operate with your garage door opener. Older LiftMaster remote controls are NOT compatible for compatible accessories. Programming can be done through the door control or the learn button the garage door opener. To program additional accessories refer to the instructions provided with the accessory or visit LiftMaster-me.com.

### TO ADD, REPROGRAM, OR CHANGE A REMOTE CONTROL/KEYLESS ENTRY PIN USING THE MULTI FUNCTION DOOR CONTROL - MODEL 883LMW

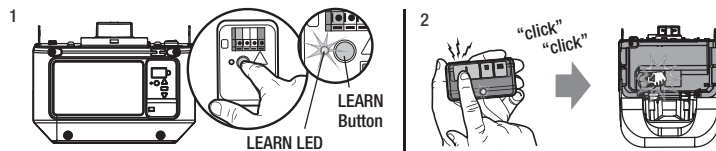
1. Press and hold the LIGHT button and the push button until the push button LED begins to blink.
2. Remote Control:  
Press the button on the remote control that you wish to operate your garage door.  
Keyless Entry:  
Enter a 4-digit personal identification number (PIN) of your choice on the keyless entry keypad.  
Then press the ENTER button.

The garage door opener lights will flash (or two clicks will be heard) when the code has been programmed. Repeat the steps above for programming additional remote controls or keyless entry devices. If programming is unsuccessful, program the remote using the learn button.

## Operation and Maintenance

### TO ADD, REPROGRAM OR CHANGE A REMOTE CONTROL USING THE LEARN BUTTON

Press and release the LEARN button on the garage door opener.  
When the garage door opener lights blink or two clicks are heard.



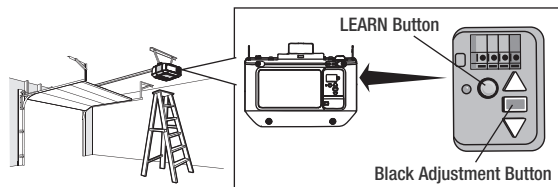
### To Erase The Memory

#### ERASE ALL REMOTE CONTROLS AND KEYLESS ENTRIES

1. Press and hold the LEARN button on the garage door opener until the learn LED goes out.  
All remote control and keyless entry codes are now erased.  
Reprogram any accessory you wish to use.

#### ERASE ALL DEVICES (INCLUDING myQ® ENABLED ACCESSORIES)

1. Press and hold the LEARN button on the garage door opener until the learn LED goes out.
2. Immediately press and hold the LEARN button again until the learn LED goes out.  
All codes are now erased. Reprogram any accessory you wish to use.



### Maintenance Schedule

#### EVERY MONTH

- Manually operate door. If it is unbalanced or binding, call a trained door systems technician.
- Check to be sure door opens and closes fully. Adjust if necessary.
- Test the safety reversal system. Adjust if necessary.

#### EVERY YEAR

- Oil door rollers, bearings and hinges. The garage door opener does not require additional lubrication. Do not grease the door tracks.

### The Remote Control Battery



**WARNING!** The wireless transmitters contain button/coin cell batteries.

- The battery is hazardous.
- Keep new and used batteries away from children.
- Do not ingest battery. Chemical burn hazard.
- If the coin cell battery is swallowed or placed inside any part of the body, it can cause severe or fatal injuries in 2 hours or less.
- If the battery compartment does not close securely, stop using the product and keep away from children.
- Dispose of used coin/button cell batteries immediately and safely. Flat batteries can still be dangerous.

To replace the battery, pry open the case in the middle, then at each side with the visor clip. Insert replacement battery positive side up (+). Replace the batteries with only 3V CR2032 coin cell batteries. Dispose of old batteries properly.

### SPECIFICATIONS

Input Voltage.....	230-240 Vac, 50-60 Hz.
Max.Pull Force.....	600 N.
Power.....	225 Watt.
Standby Power.....	
Normal Torque.....	7 Nm.
Max door weight.....	150 kg.
Max lift under spring tension.....	20 kg.
Max door area.....	Sectional Doors Tilt Doors 18m2.

# Troubleshooting

## Diagnostic Chart

Your garage door opener is programmed with self-diagnostic capabilities. The UP and DOWN arrows on the garage door opener flash the diagnostic codes.

DIAGNOSTIC CODE		SYMPTOM	SOLUTION
Up Arrow Flash(es)	Down Arrow Flash(es)		
1	1	The garage door opener will not close and the light bulbs flash.	Safety reversing sensors are not installed, connected, or wires may be cut. Inspect sensor wires for a disconnected or cut wire.
1	2	The garage door opener will not close and the light bulbs flash.	There is a short or reversed wire for the safety reversing sensors. Inspect safety sensor wire at all staple and connection points, replace wire or correct as needed.
1	3	The door control will not function.	The wires for the door control are shorted or the door control is faulty. Inspect door control wires at all staple and connection points, replace wire or correct as needed.
1	4	The garage door opener will not close and the light bulbs flash.	Safety reversing sensors are misaligned or were momentarily obstructed. Realign both sensors to ensure both LEDs are steady and not flickering. Make sure nothing is hanging or mounted on the door that would interrupt the sensor's path while closing.
1	5	Door moves 15-20 cm stops or reverses.	Manually open and close the door. Check for binding or obstructions, such as a broken spring or door lock, correct as needed. Check wiring connections at travel module and at the logic board. Replace travel module if necessary.
		No movement, only a single click.	Manually open and close the door. Check for binding or obstructions, such as a broken spring or door lock, correct as needed. Replace logic board if necessary.
		Opener hums for 1-2 seconds no movement.	Manually open and close the door. Check for binding or obstructions, such as a broken spring or door lock, correct as needed. Replace motor if necessary.
1	6	Door coasts after it has come to a complete stop.	Program travel to coasting position or have door balanced by a trained door systems technician.
2	1-5	No movement, or sound.	Replace logic board.
3	2	Unable to set the travel or retain position.	Check travel module for proper assembly, replace if necessary.
3	1-4	Door is moving stops or reverses.	Manually open and close the door. Check for binding or obstructions, such as a broken spring or door lock, correct as needed. If the door is binding or sticking contact a trained door systems technician. If door is not binding or sticking attempt to reprogram travel.
4	5	Opener runs approximately 6-8" (15-20 cm), stops and reverses.	Communication error to travel module. Check travel module connections, replace travel module if necessary.
4	6	The garage door opener will not close and the light bulbs flash.	Safety reversing sensors are misaligned or were momentarily obstructed. Realign both sensors to ensure both LEDs are steady and not flickering. Make sure nothing is hanging or mounted on the door that would interrupt the sensor's path while closing.